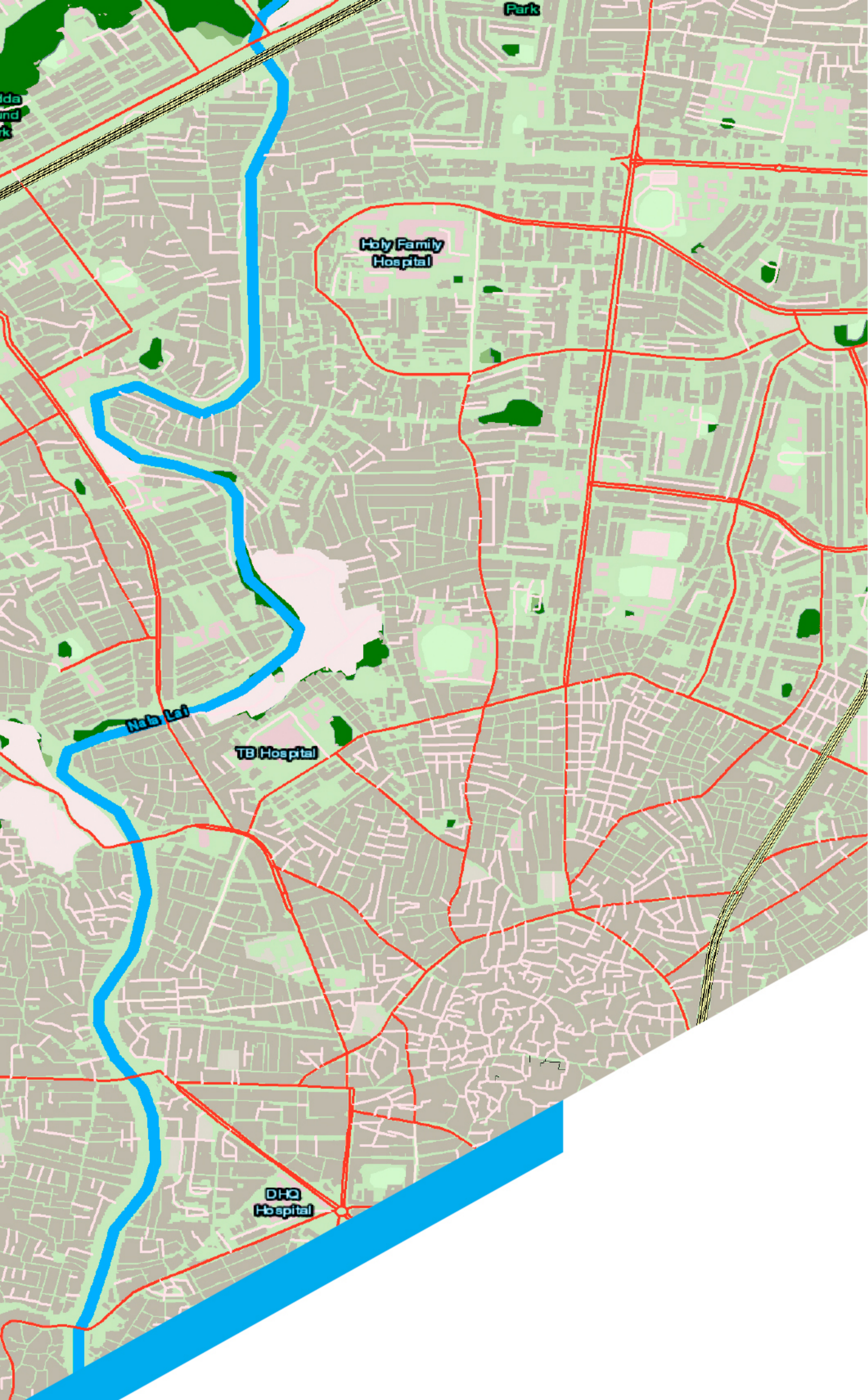


COUNTRY	Area, km <sup>2</sup>
Bangladesh	148 460
Brunei	5 765
Cambodia	181 035
East Timor	15 000
Laos	236 800
Malaysia	329 847
Myanmar	676 577
Pakistan	803 940
Philippines	300 000
Singapore	927
South Korea	100 210
Sri Lanka	65 610
Taiwan	36 197
Thailand	513 120
Vietnam	331 210

# 10M RESOLUTION COUNTRYWIDE MAPS

OF SOUTH, EAST AND SOUTHEAST ASIA COUNTRIES  
FOR ACCURATE RF-PLANNING



# VISICOM REGIONAL MAPS LINE

CREATED USING AI TECHNOLOGY BASED ON  
MULTISPECTRAL SATELLITE IMAGES PROCESSING

The manual data correction process and multilevel quality control provide accurate, consistent and detailed landscape and urbanized areas classification

## PRODUCTS FEATURES

- 10m resolution
- Accurate land use classification
- Last available administrative division
- Imagery source: 5m and 10m resolution multispectral images
- Vintage: 2021-2022
- Easy to use due to support of all major RF-planning tools and GIS formats

## DATA FORMATS

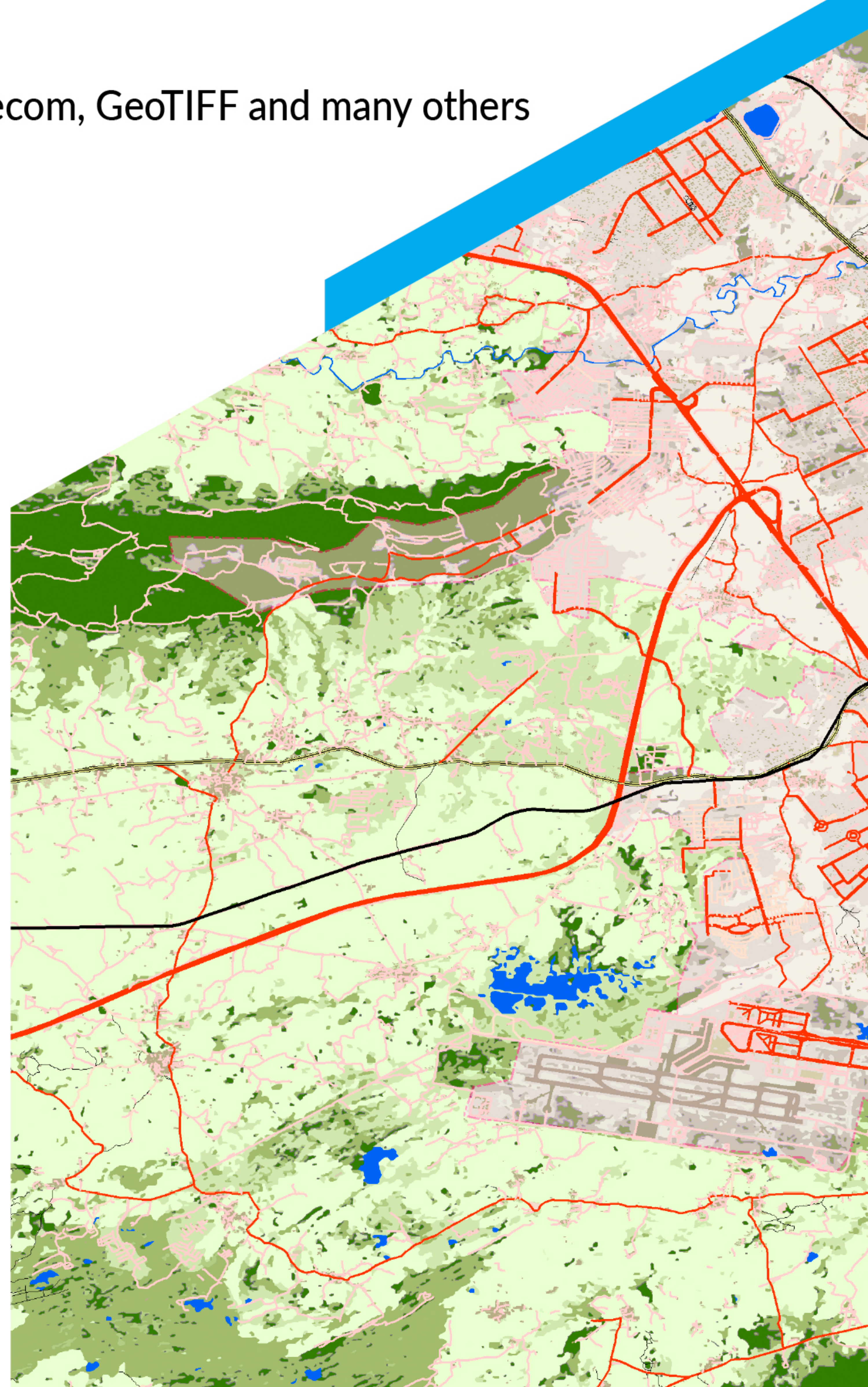
ATOLL, ASSET, PLANET, ESRI shp, MapInfo, ICS Telecom, GeoTIFF and many others

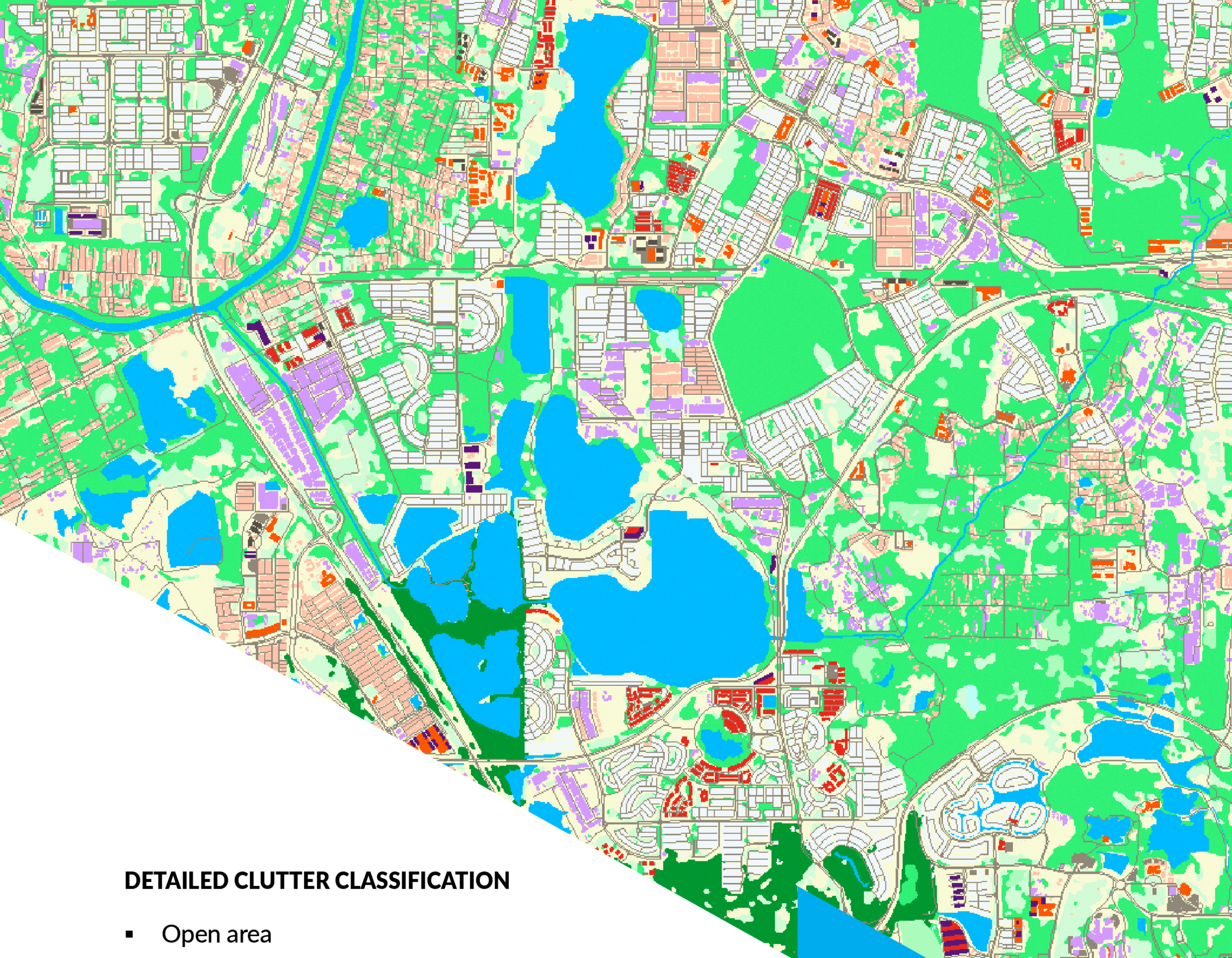
## PRODUCTS INCLUDE

- Digital Terrain Model
- Clutter/Landuse Model
- Street/Road Networks
- Railways
- Water Objects
- Detailed Administrative Boundaries

## SUPPORTED INDUSTRIES

- Telecom
- Climate change mitigation
- Flood mapping
- Green infrastructure deployment
- Utilities
- Transportation





## DETAILED CLUTTER CLASSIFICATION

- Open area
- Forest
- Sparse forest
- Wetland
- Bushes
- Grass
- Agricultural lands
- Sea
- Inland water
- Residential, suburban
- Dense residential
- Urban
- Dense urban
- Block of buildings
- Industrial and commercial
- Villages
- Open areas in urban
- Airport
- High buildings

JSC «VISICOM»  
phone +380 44 201 00 86  
email: radioplan@visi.com.ua  
[www.visicomdata.com](http://www.visicomdata.com)

**VISICOM**<sup>®</sup>  
[www.visicomdata.com](http://www.visicomdata.com)