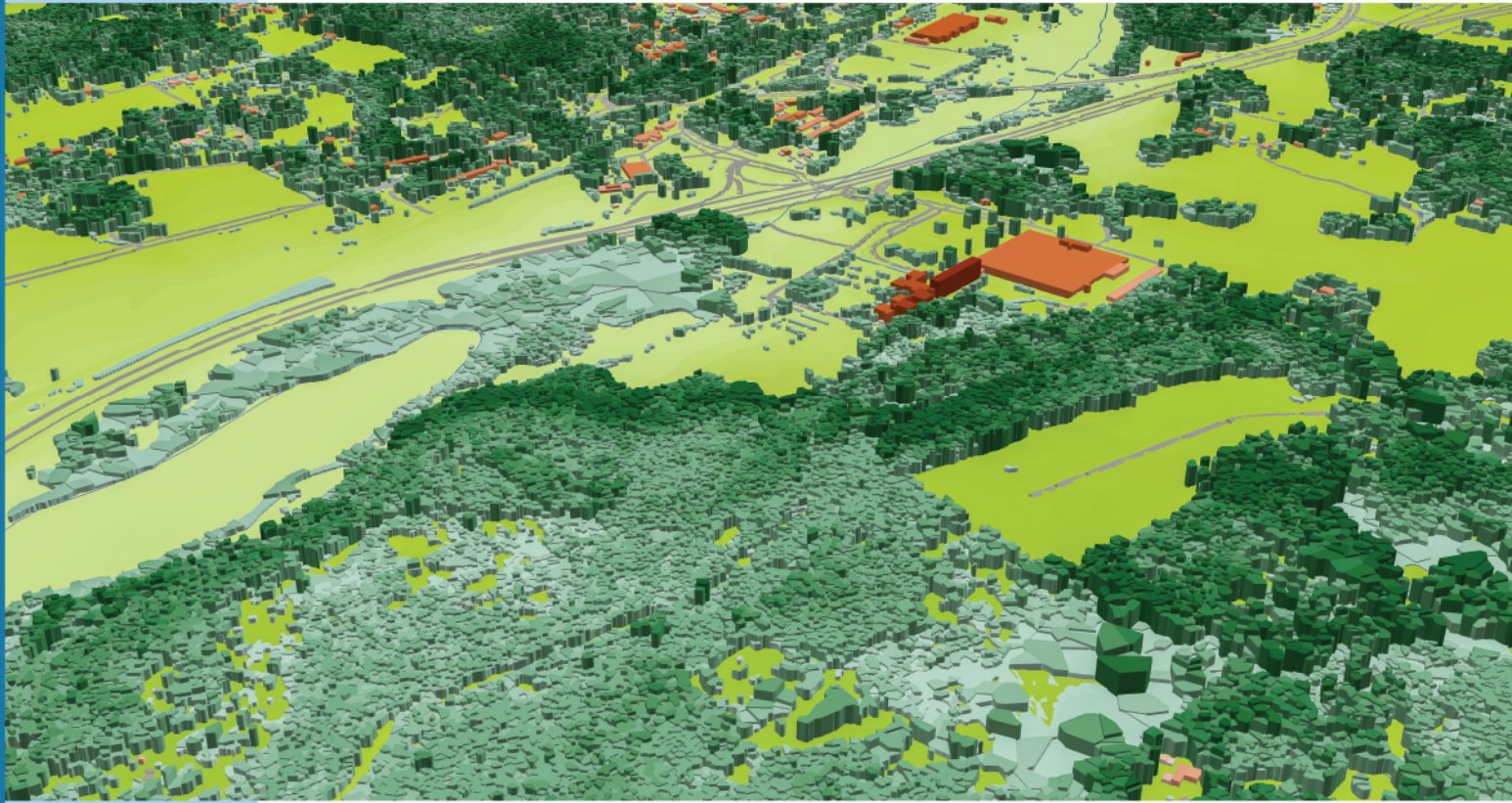


# JORVAS



#### PARAMETERS OF ACCURACY

- RESOLUTION: 1M
- ALTIMETRIC ACCURACY OF DTM: 1-2M
- PLANIMETRIC ACCURACY: 2-3M
- BUILDING HEIGHTS ACCURACY: 1-2M
- VEGETATION HEIGHTS ACCURACY: 1-2M
- MINIMAL MAPPING UNIT: 16 SQ.M

#### DELIVERED LAYERS:

- DIGITAL TERRAIN MODEL (DTM)
- DIGITAL ELEVATION MODEL (DEM)
- DIGITAL SURFACE MODEL (DSM)
- CLUTTER/LANDUSE – 29-31 CLASSES
- VECTOR OBJECTSL – 9-11 CLASSES
- ORTHOIMAGE

#### DATA FORMATS:

- DELIVERY IN ANY RF PLANNING TOOL FORMAT
- COMPATIBILITY WITH ANY PROPAGATION MODELS
- SUPPORT OF MAJOR GIS SOFTWARES

#### OBSTACLES HEIGHTS MODEL

- BUILDING WITH SMALL ROOF DETAILS
- INDIVIDUAL 3D TREES
- GROUP OF TREES WITH CANOPY HEIGHT
- BRIDGES - PRECISE AND DETAILED ENGINEERING CONSTRUCTIONS

THE DATA SAMPLE FOR TESTING WILL BE PROVIDED FREE-OF-CHARGE

OUR TEAM IS ALWAYS IN TOUCH TO PROVIDE YOU WITH ALL NECESSARY INFORMATION ABOUT VISICOM'S PRODUCTS AND ASSIST WITH PRE-SALES ENQUIRIES

VISICOM Headquarters, Kyiv, Ukraine  
phone +380 44 201 00 86  
email: [radioplan@visi.com.ua](mailto:radioplan@visi.com.ua) [www.visicomdata.com](http://www.visicomdata.com)

**VISICOM**<sup>®</sup>  
DIGITAL MAPS WORLDWIDE