

# SOUTH KOREA

## 13 MAJOR CITIES



3D CITY MODELS COVER 1064 SQ.KM AREA OF 13 CITIES

3D GEODATA ACCURACY - 3-5 M IN X,Y,Z.

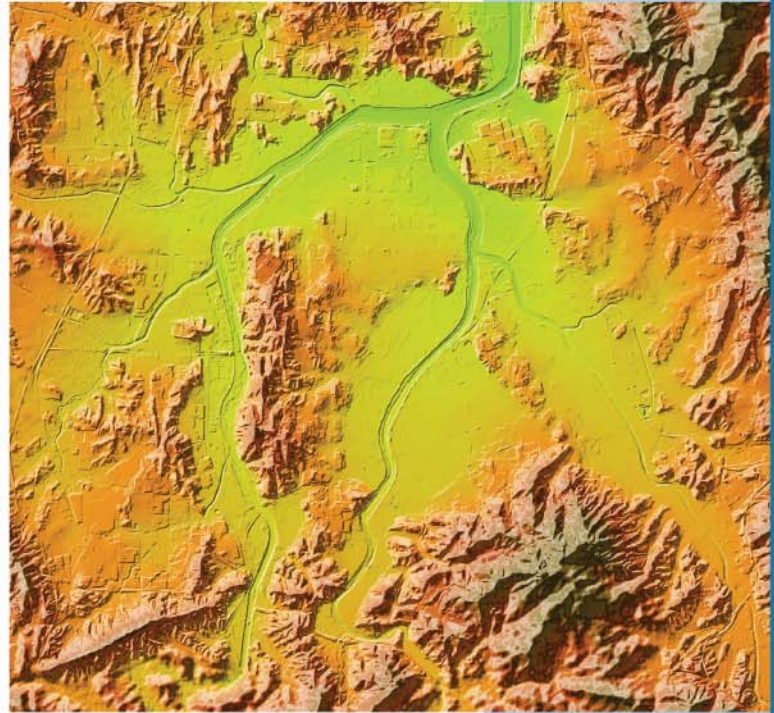
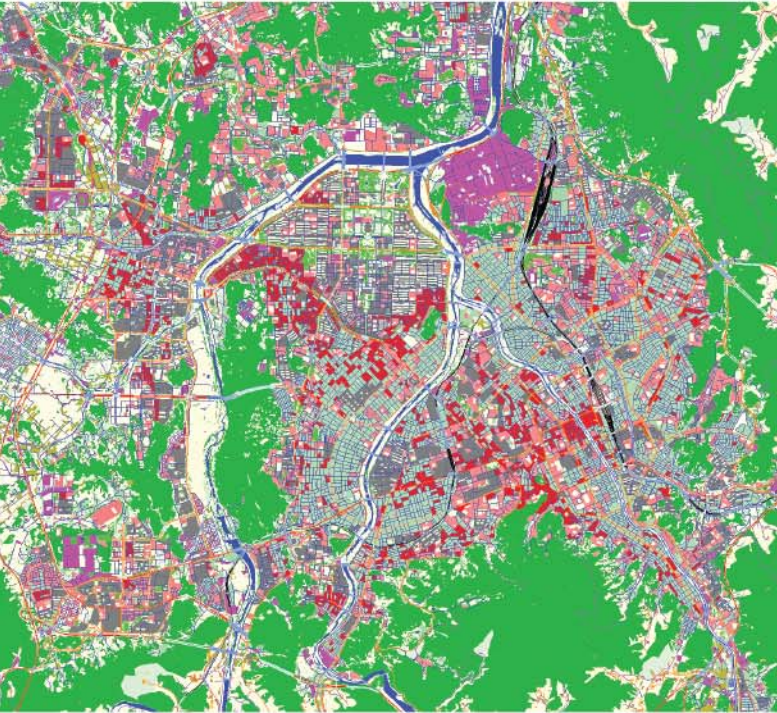
OUR GEODATA MADE SPECIFICALLY FOR TELECOM INDUSTRY  
PROVIDE PRECISE KNOWLEDGE ABOUT 3D ENVIRONMENT  
IN ORDER TO HELP OPERATORS DESIGN AND IMPROVE  
PERFORMANCE OF THEIR RADIO NETWORKS.

VISICOM'S ADVANCED MAPPING PRODUCTS SUPPORT ANY  
RF TOOL FORMAT (ATOLL, ASSET, PLANET, MENTUM PLANET,  
PATHLOSS ETC.)

CITY NAME	AREA, KM2
CHUNGCHEONGNAM-DO	181
DAEJEON	203
WONJU	248
CHUNCHEON	190
DONGHAE CITY	79
GANGNEUNG	31
SAMCHEOK	26
YEONGWOL	18
DONGSONG	9
SOKCHO	9
HONGCHEON	8
SEJONG	62
TOTAL AREA	1064



# SOUTH KOREA REGIONAL MODELS



PROVINCE NAME	AREA, KM2
CHUNGCHEONGNAM-DO	8192
DAEJEON	540
GANGWON-DO	16866
SEJONG	465
TOTAL AREA	26063

**VINTAGE: 2018**

**RESOLUTION: 10M**

**TOTAL AREA 26063 SQ.KM**

OUR GEODATA MADE SPECIFICALLY FOR TELECOM INDUSTRY PROVIDE PRECISE KNOWLEDGE ABOUT 3D ENVIRONMENT IN ORDER TO HELP OPERATORS DESIGN AND IMPROVE PERFORMANCE OF THEIR RADIO NETWORKS.

VISICOM'S ADVANCED MAPPING PRODUCTS SUPPORT ANY RF TOOL FORMAT (ATOLL, ASSET, PLANET, MENTUM PLANET, PATHLOSS ETC.)

**DATA CONTAIN:**

- DIGITAL TERRAIN MODEL (DTM)
- CLUTTER/LAND USE
- ROADS AND STREETS NETWORK
- DETAILED ADMINISTRATIVE DIVISION

PRODUCT DESIGNED FOR USE WITH ANY RF PLANNING SOFTWARE – ATOLL, PLANET, ASSET, ICS TELECOM AND OTHERS

VISICOM Headquarters, Kyiv, Ukraine  
phone +380 44 201 00 86  
email: radioplan@visi.com.ua www.visicomdata.com

