

SINGAPORE

DIGITAL MAPS TAILORED TO 5G PLANNING



■ TOTAL AREA: 2300 SQ.KM

■ INCLUDES COUNTRYWIDE +15KM SEA BUFFER

AVAILABLE DELIVERY OPTIONS:

- 3D Model of 1m resolution with 3D Trees
- 3D Model of 5m resolution with generic vegetation
- 2.5D Model of 5m resolution
- 2D Model of 5m resolution

DATA LAYERS:

- DTM
- Clutter model (Landuse) including Sea Area
- Vector linear objects (roads, railways, water)
- 3D shapes of buildings, vegetation and bridges
- Obstacles Heights Model - matrixes (building, vegetation, bridges and overpasses)
- Orthoimage

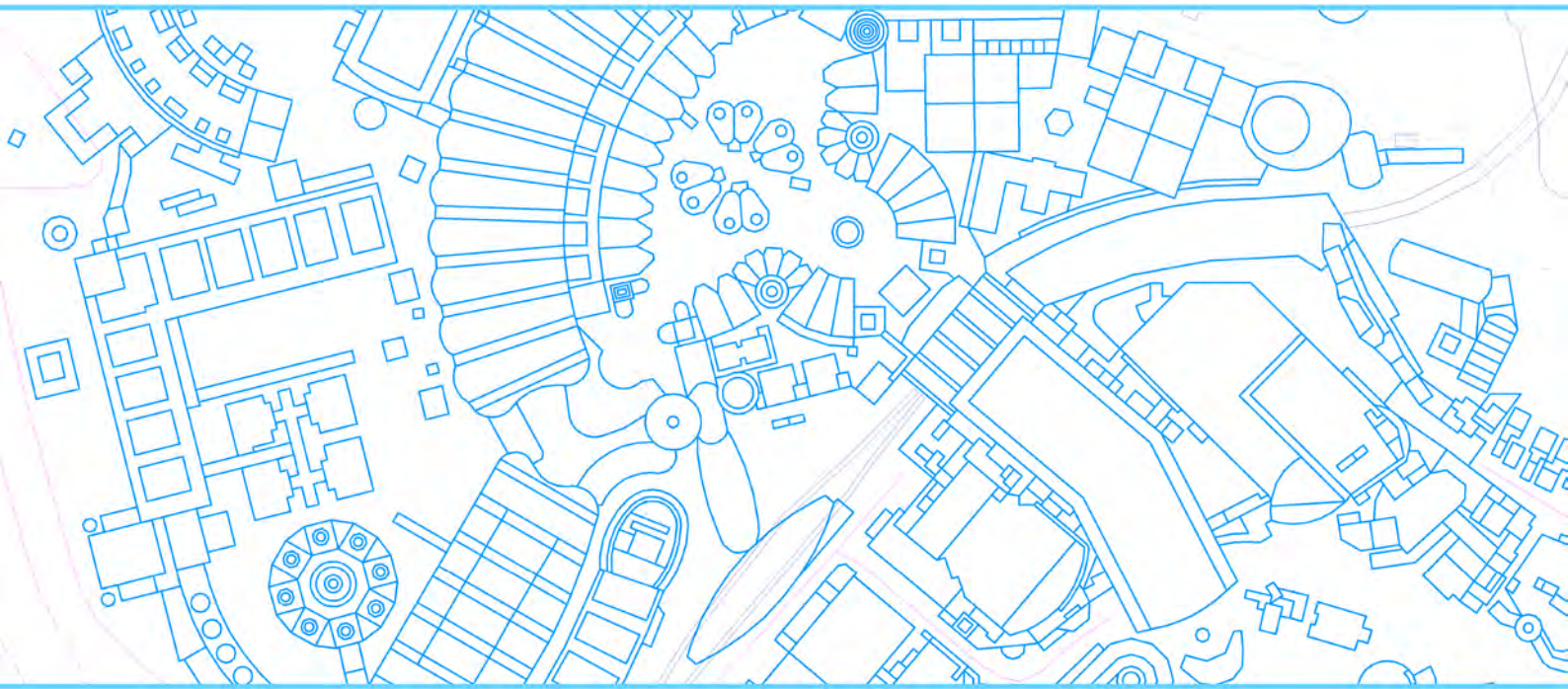
VISICOM GEODATA ARE DELIVERED IN ANY RF PLANNING SOFTWARE - FORSK ATOLL, TEOCO ASSET, INFOVISTA PLANET, ATDI ICS TELECOM, RANPLAN PROFESSIONAL, ETC.

25/2 Velyka Zhytomyrs'ka str., Kyiv, 01001 Ukraine
phone +380 44 201 00 86
email: radioplan@visi.com.ua www.visicomdata.com

VISICOM[®]
DIGITAL MAPS WORLDWIDE

SINGAPORE

DIGITAL MAPS TAILORED TO 5G PLANNING



Machine Learning Algorithms and Convolution Neural Networks are used to capture 3D buildings with a high accuracy level of details and tree crowns classification



25/2 Velyka Zhytomyrs'ka str., Kyiv, 01001 Ukraine
phone +380 44 201 00 86
email: radioplan@visi.com.ua www.visicomdata.com

VISICOM[®]
DIGITAL MAPS WORLDWIDE

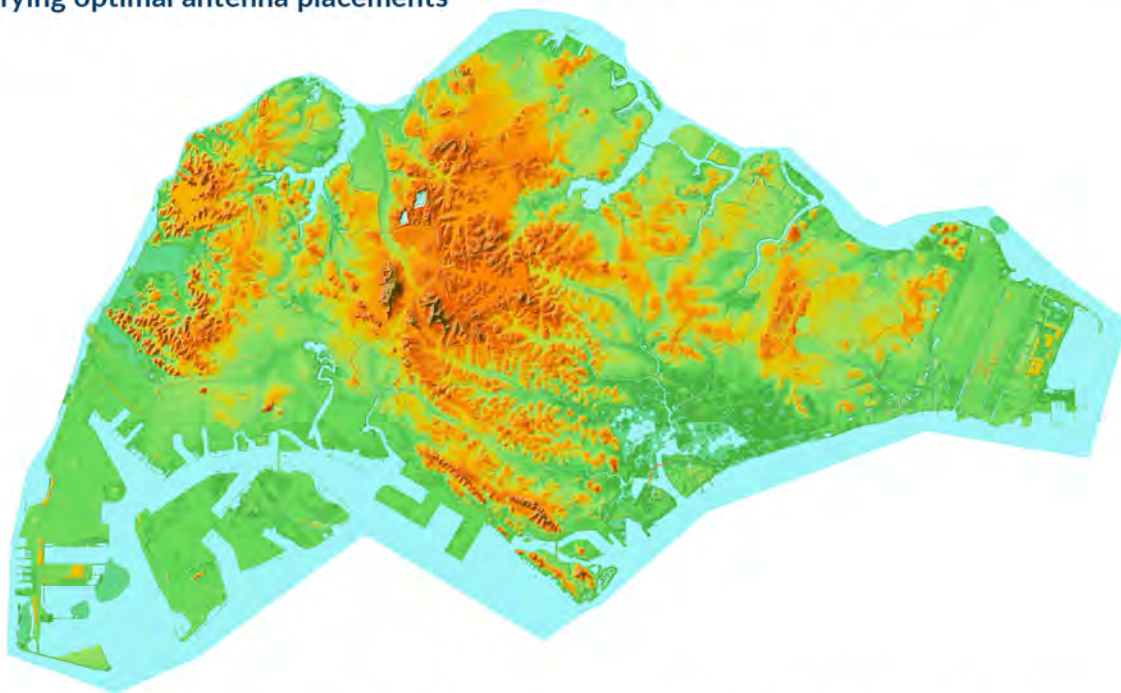
SINGAPORE

DIGITAL MAPS TAILORED TO 5G PLANNING

Extended clutter classification provides accurate city structure in very complicated built-up environments



The DTM data provides precise elevation information for designing radio frequency links and identifying optimal antenna placements



OUR GEODATA SOLUTION FITS THE TELECOM MARKET NEEDS AND ENABLES OUR CUSTOMERS TO MAKE THE OPTIMAL DECISION BASED ON THE BEST QUALITY GEODATA

25/2 Velyka Zhytomyrs'ka str., Kyiv, 01001 Ukraine
phone +380 44 201 00 86
email: radioplan@visi.com.ua www.visicomdata.com

VISICOM[®]
DIGITAL MAPS WORLDWIDE