

POPULATION MAPS

VITAL SOURCE DATA FOR NETWORK DEPLOYMENT, PLANNING, DIMENSIONING

- To assess the market potential and priorities for new deployments
- To define strategic customers coverage or critical areas
- For densifying the network
- To demonstrate spectrum conditions have been achieved via population coverage
- For capacity simulations for the planned network infrastructure
- To determine network priorities
- To build nominal infrastructure budget

Country	AREA, km ²
Algeria	2,382,000
Armenia	29,000
Azerbaijan	89,000
Belarus	206,781
Georgia	66,826
Kyrgyzstan	199,319
Ukraine	578,000
Myanmar	721 366
Oman	308 422
Papua New Guinea	481 810
Vietnam	332,698

VISICOM POPULATION MAPS VALUE

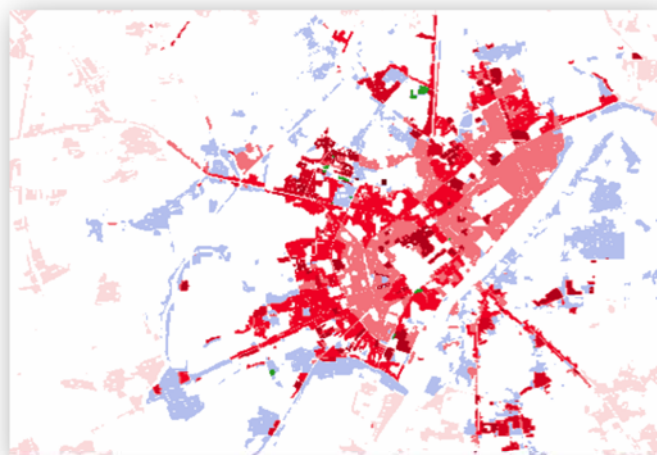
- Visicom Population Maps are based on the number of algorithms of data sources interpretation
- The source, vintage and details of administrative boundaries for population maps vary with the available information for the requested country
- We use the latest available data or extrapolate older inputs in case of lack of up-to-date Information

VISICOM OPERATES WITH

- Unique production methodology
- Objective data interpretation
- Detailed, relevant and accurate source data
- Best quality/price solution
- Individual attitude to each project

POPULATION DISTRIBUTION MODEL MAY INCLUDE:

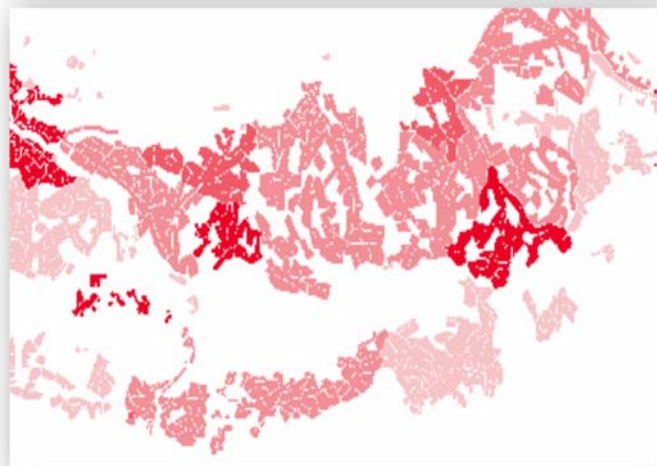
- Population quantity for each administrative unit, block, building (Vector Model);
- Population density per area units (Raster model);
- Population density per each cell of the raster grid.
- Administrative boundary of settlements (cities, towns, villages, etc)



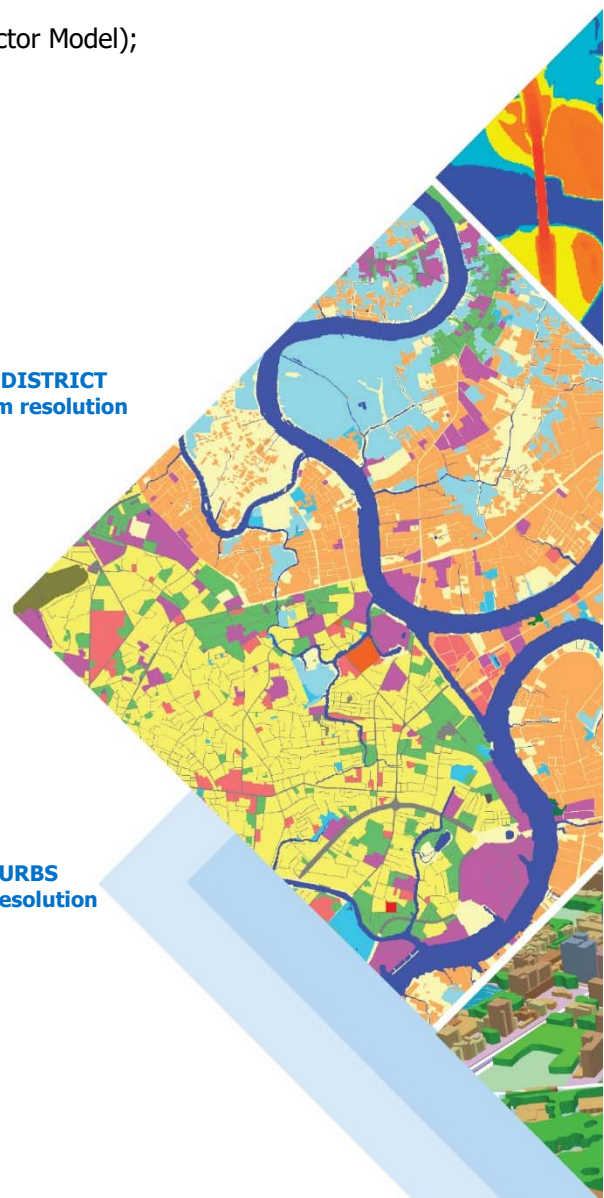
PROVINCE/DISTRICT
10 m and 20 m resolution



CITY/SUBURBS
2 m and 5 m resolution

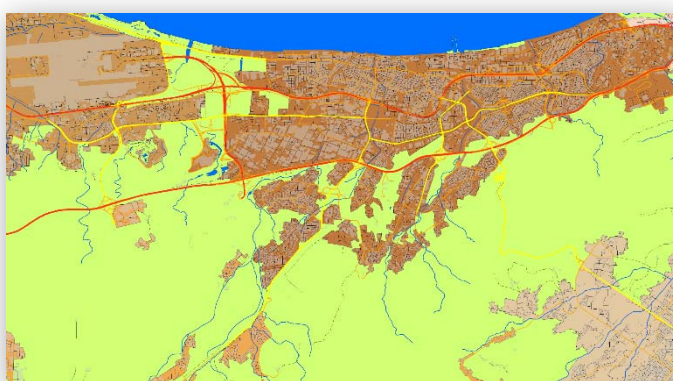


COUNTRYWIDE
20 m and 30 m resolution

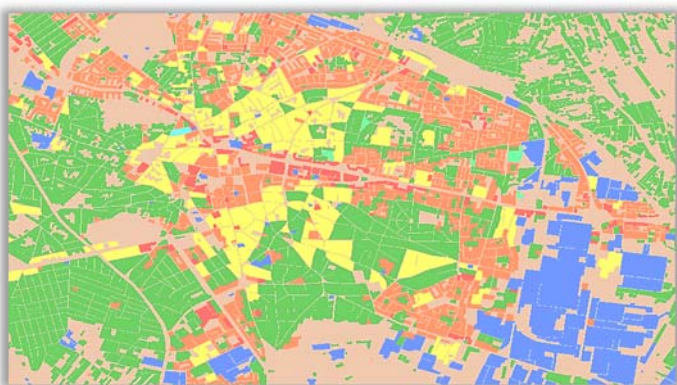


VISICOM PRODUCTS ARE DELIVERED IN ALL MAJOR RADIOPLANNING TOOL AND GIS FORMATS

Population maps can be delivered in raster or vector format totally corresponding to Clutter model



POPULATION MAP - VECTOR FORMAT



POPULATION MAP - RASTER FORMAT



SOURCES CLUTTER (LAND USE)

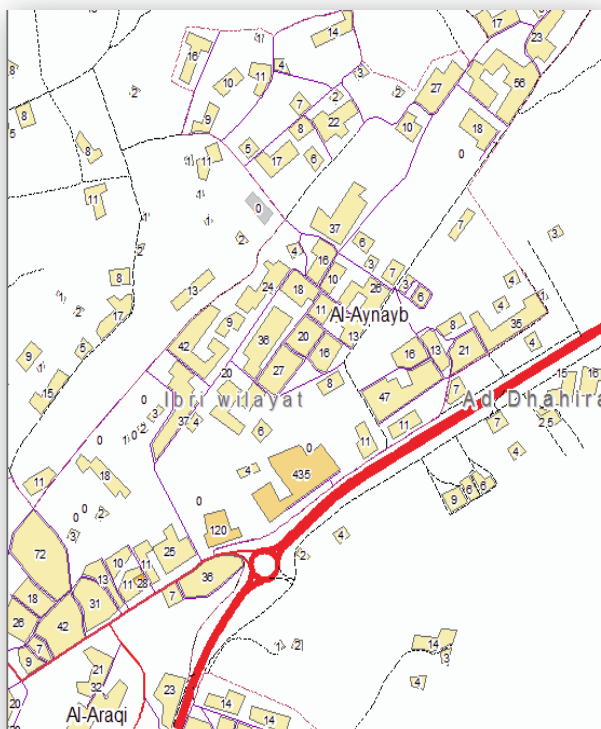
SOURCES:

- Clutter Model of Countrywide and/or cities
- Administrative territorial division
- Boundaries of built-up areas
- Last available census

VECTOR MAP – SAMPLE OF POPULATION MAP FOR OMAN



**For cities
(Population per household)**



**For regions
(Population per block)**