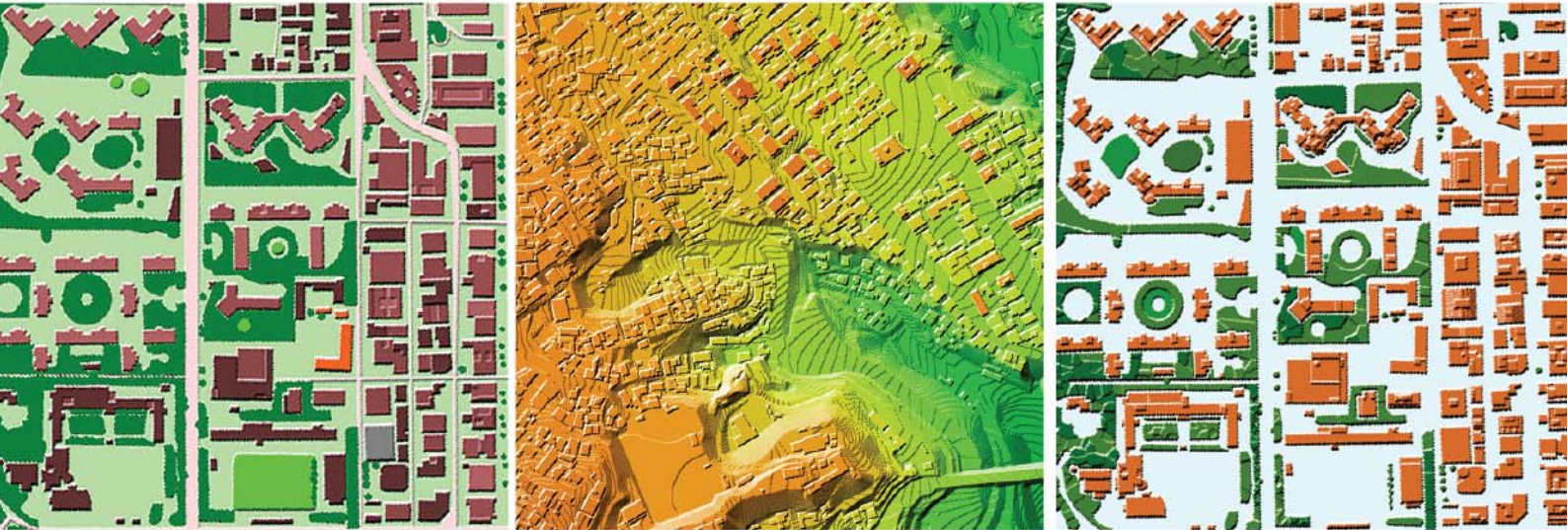


3D GEODATA

ADVANCED ACCURACY FOR HIGHLY ACCURATE NETWORKS PLANNING



1M RESOLUTION MODEL OF CITY/SUBURB

3D BUILDINGS	Small roof details, 1-2m accuracy in height
3D BRIDGES	Precise and detailed engineering constructions
3D VEGETATION	Detailed vegetation with assigned height attributes
DSM/DTM	1-2m height accuracy in terrain features
CLUTTER/LAND USE	Includes all obstacles features and detailed vegetation layer

WE DELIVER THE BEST POSSIBLE DATA FOR REAL-WORLD SIMULATION AND EFFECTIVE PLANNING
PRECISELY DESIGNED FOR NEXT-GENERATION NETWORKS



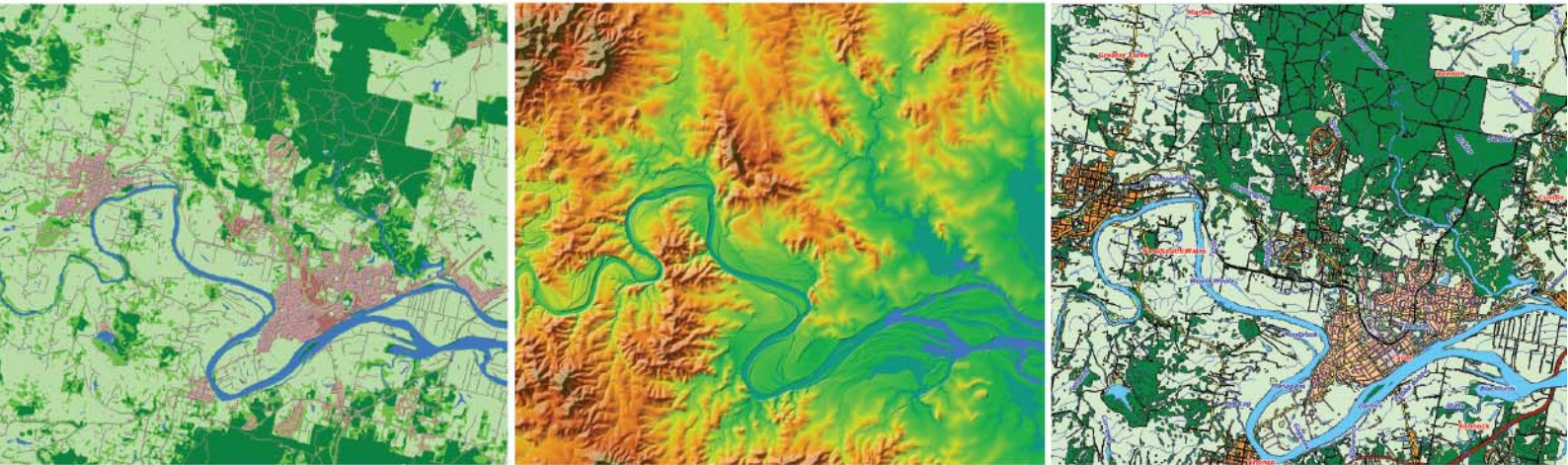
2.5D GEODATA for large suburb and rural areas

To meet challenges of 5G networks design outside of cities Visicom produces 2.5D Models that add height values for buildings and vegetation features in suburb and rural areas.

Usage of 2.5D Models provides precise and cost-effective modelling of obstacles heights over large areas like in urban and integrate planning process inside and outside of cities.

FROM 5M UP TO 20M RESOLUTION MODEL OF REGIONS/VILLAGES/RURAL AREAS

2.5D BUILDINGS	Buildings and buildings blocks with assigned height attributes, 3-5m accuracy
2.5D VEGETATION	Detailed vegetation with assigned height attributes, 5m accuracy
DSM/DTM	3-5m accuracy in terrain features
CLUTTER/LAND USE	Includes all obstacles feature and detailed vegetation layer
2D LINEAR VECTOR	Road and street networks, railroads, boundaries



VISICOM DELIVER UP-TO-DATE AND HIGH QUALITY GEODATA OVER THE WORLD - FROM CITY TO COUNTRY - AS 3D, 2.5D OR 2D MODELS IN ALL MAJOR RF PLANNING AND GIS FORMATS

